



NewTek
VT[4]TM
Integrated Production Suite

VT[4]TM

The Integrated Production Suite

Awards for NewTek's
Integrated Production Suite
in 2004:



"...unanimous winner of the
2004 Best Product award..."



"NAB 2004 Best of Show:
Streaming Hardware"

NewTek's VT[4]TM Integrated Production Suite is the culmination of years of planning and engineering for a set of production tools like no other. The Emmy®-winning company that created desktop video and defines the cutting-edge in production suite integration brings you the solution you need to meet your live and post production goals with more power, flexibility and affordability than you ever dreamed possible. VT[4] provides live switching, the world's fastest and most versatile editor, tightly integrated with everything you need for production, post-production, and graphics: real-time keying, titling, compositing, 2D video painting, 3D modeling and animation. VT[4] delivers all of this plus unsurpassed video quality with uncompressed component digital video and four-channel audio.

The SX-84 adds up to 24 inputs with a hardware switcher controller, component, Y/C and composite inputs and outputs, balanced XLR inputs and outputs with line and mic selectability, 3 RS-422 deck control ports, genlock input and pass-through, and more. There is quite simply no comparable live production suite available.

If you are a professional video producer, you should use the world's most powerful and mature real-time, uncompressed, multi-format, multi-standard editing and live-production solution. VT[4] is designed to meet the highest broadcast specifications for a worldwide market, with native NTSC and PAL input and output, over 500 real-time 3D transitions and real-time standards conversion on the fly. With DVD authoring, serverless streaming at the touch of a button, real-time audio and video filters, the ability to process the host system's display as an input, four-channel audio input and output with 3D audio positioning, integrated genlock and real-time DV out, VT[4] provides unmatched versatility and integration.

NewTek's VT[4] Integrated Production Suite is also engineered to work flawlessly with other tools in your production pipeline. In addition to LightWave and Aura, a rapidly growing number of producers using After Effects®, combustion®, Digital Fusion®, 3ds max®, and more are discovering that NewTek's VT[4] provides an incredible productivity boost. With native framebuffer support for these and other applications, you have instant feedback on what your shots, graphics, and composites will look like at broadcast time. Try this faster workflow and you may well discover that you are ready to retire your current system.

Intuitive, polished, complete, with the rock-solid stability of a mature technology from the leading innovator in video production tools, see for yourself how VT[4] is ready to meet your production needs.

"The quality in VT4 when scaling and transforming images and video really blows my mind. Looks even better than what you get out from a Flame8TM system, and that isn't bad!"

—Peter Karlsson
Founder, CG Sweden



“You have truly out-done yourselves... in ways I couldn’t imagine. You have topped the rooms full of rack-mount equipment I’ve seen that produce live newscasts, local and national programming. Yes, true, it is a TV-Studio-in-a-box™, but not a “bare-bones” system - VT[4] is something that could be used for national broadcast without breaking a sweat.”
 —*Timothy Albee*
 Producer, Author, Digital Artist

VT[4]’s professional Live Production tools.



VT[4] is superb for broadcast animation.



© 2003 Joe Zeff



NBC’s Access Hollywood relies on VT[4] for rapid graphics turnaround.



VT[4] LIVE!™ is powerful enough to exceed the needs of Trinity United Methodist Church (TUMC) and also helps TUMC bring in outside events. Organizers rent the facility with full crew, and often include many more participants and more views than the four-camera setup TUMC uses for its services. VT[4] LIVE! is ready to switch up to 24 sources, and no need for expensive genlockable cameras or time-base correctors - VT[4] LIVE! synchronizes all sources internally. Lead producer for TUMC, Marty Bibee, “Four cameras are routine, but we used six for an Angela Spivey video DVD live concert. We also used six cameras in a high school graduation production. Having the capability to add up to 24 live sources gives us ultimate room for growth.”

VT[4] LIVE!™ provides flexible power in this fast-paced environment. Of all the attributes Bibee enjoys about NewTek’s VT[4] LIVE! production suite, none perhaps is valued more than its stability during a high-pressure live event. “In live production stability is not optional, and VT[4] continues all the stability of its’ predecessors while adding safeguards for a successful switch, such as “at a glance” confirmation of DDR settings. The system has never crashed in any version, while we were on the air.”

Dan Hong, of We Three Multimedia, finds VT[4] LIVE!’s combination of capability, quality and affordability compelling, Dan urges everyone in the market for real-time production power to do their homework. “Do yourself the service of seeing VT[4] Live! before you purchase. Go see all the other systems, and then see how unique VT[4] LIVE!’s workflow is. There is nothing at any price, at any level, that can do this 5-star stuff in a single integrated production suite.”

City TV - Channel 3 of the City of Connersville, IN, a government and educational access station, uses NewTek’s Integrated Production Suite for live programming, enhanced with prepared graphics, titles and video segments. “VT[4] LIVE! is fantastic at adding professional graphics and extremely easy to use as a live switcher; especially since we added the RS-8™ external switching console,” said John Pause, Director of City TV - Channel 3. “Another feature we find extremely useful is the DDR. We have our opening and closing video pieces already cued and ready to go; all you have to do to activate the video is switch to the DDR on the RS-8, and it automatically starts playing. It just doesn’t get any easier; all while using a 3D transition and applying a full color broadcast quality graphic - all on the same machine!”

VT[4] in use for live switching.

[Live Production]



Real-time sizing of all CG objects.



Physical switching with the RS-8™ Switcher Control Module.



Multiple video ins and outs with the optional SX-84™.

“It’s not hyped-up marketing when NewTek says that the VT[4] is one of the best turn-key values for churches needing to combine all of these features for a fraction of the budget of traditional video equipment. This is one of those rare times when, yes, you get to have your cake and eat it, too.”

—Anthony Coppedge
Church Media Hotlist

“I have been switching live events for decades and never had this kind of ease. It rolled in modules, clips and keys with great stability and with such efficiency that I didn’t have to have a crew of four just to handle rolling in all the elements.”

—Keith Nealy
Keith Nealy Productions

Live Switching

- 8 Component inputs
- 8 Y/C inputs
- Up to 24 Composite inputs
- Unlimited DV inputs
- Real-time FireWire input or output
- Automated Audio Mixer
- 4 Component outputs
- 4 Y/C outputs
- Preview output
- 4 Composite outputs
- 3 RS-422 machine control ports
- Real-time chroma key
- Cue mode in Digital Disk Recorder
- 500+ digital transitions
- Dual GPI In / Out
- 8 Internal Tally light controls
- Background generator
- Internal Genlock

Audio Mixer

- Mix 8 stereo live and 8 4-channel online audio sources
- 4-track audio: 4 discrete channels of audio in and out
- Talk-over, reduces mix levels for mic inputs to talk over
- 4 adjustable XLR balanced mic/line inputs with Phantom power
- 6 stereo unbalanced audio ins from live sources
- 8 stereo inputs from computer sources
- DV and SDI audio inputs
- Floating point audio with distortion-free audio levels
- EQ, balance, mute and mono for all 16 audio inputs
- Aux Mix: stereo aux send and aux returns for external sweetening
- Automated mixing: transition between audio presets
- Calibrated audio meters
- Audio-follows-video option
- Manage your output mix with Input Pass Thru
- PA Mix Out: for live PA or control room feed
- Balance on all inputs and outputs

Character Generator

- WYSIWYG editing
- Save projects or pages
- Display Program output within CG interface
- Use any installed TrueType font
- Save pages as 32-bit images or animations
- Soft shadows
- Create graphic objects (boxes, circles, splines)
- Instantly save or recall text styles
- Powerful drawing tools

- Ultra-intuitive interface
- Integrated Timeline and Storyboard editing
- Unlimited layering in real-time
- 3D control of position, size and rotation of layers in real-time
- Spline-based movement of all animations
- Unlimited undo, saved with project
- Real-time color correction
- No rendering of complex projects required
- Create subprojects within a project

VT-Edit™

- CG Post™ for moving text
- Real-time Targa sequence playback
- Multi-format and multi-standard editing
- Real-time playback of compressed and uncompressed clips
- Real-time FireWire in and out
- More than 500 real-time transitions
- Real-time slow motion and reverse
- Real-time chroma and luma keying
- Real-time high-quality scaling of graphics
- Real-time video and audio filters
- Real-time audio mixing of unlimited layers
- 3D audio positioning
- 12dB of audio headroom prevents digital distortion
- All performed in software

Proc Amp

- Brightness
- Contrast
- Hue
- Saturation
- U Offset, V Offset
- U Gain, V Gain
- Track Preview function
- More than 70 adjustable parameters
- Calibrate computer sources as well as analog sources
- Auto Calibration for 75 IRE bars, 100 IRE bars and video pass-through mode (requires SX-84)

VT-Scope™

- Full-frame data
- 60 fields-per-second
- Monitor Program or Preview
- Waveform of Y/C, Y, C, YUV or RGB
- Vectorscope at either 75% or 100% Chroma

VT-Vision™

- Fully fielded on-screen playback
- YUV video display
- Monitor Program, Preview, Key / Aux or DSK buses
- Display supports for 4:3 and 16:9 aspect
- Underscan mode
- Zebra stripes for 75 IRE and illegal video
- Proc-Amp for matching computer display to reference video monitors

LightWave 3D®

- Established industry standard
- World-class rendering
- Fast, versatile Modeler
- Powerful scripting language
- Advanced character Animation tools
- Particles
- Explosions
- Numeric entry (and math in input fields)
- Unlimited points and polygons per object
- Multiple cameras per scene
- Unlimited images
- Unlimited surfaces
- Easy import of Illustrator® data

Digital Video Effects

- More than 500 real-time transitions
- All transitions reversible
- Expansions
- Wipes
- Curls
- Trajectories
- Fades
- ChromaFX
- Overlays
- Rotations
- Compressions
- Borders
- Much more

VT Digital Disk Recorder (VT-DDR™)

- Multi-format, multi-standard on-screen tape deck
- Compressed or uncompressed playback
- Play back a single clip or list of clips
- Cue clips to roll when triggered by Switcher
- Real-time transitions between clips
- Count up or count down project time or clip time
- Operate multiple DDRs simultaneously
- EDL import/export (Grass Valley, CMX, Sony, Excel)

External Controller

- Control external decks from your VT[4] desktop
- Supports multiple RS-422 and DV decks
- Interfaces with batch capture deck lists and configurations
- Jog and shuttle support
- Record allows user to generate time code settings

Aura Video Paint™

- Amazingly fast 16-bit paint engine
- Paint over live video
- Four-point pixel tracking
- Color isolation
- 3D compositing
- Stroke recorder
- Wide range of text controls
- Instantly use a graphic's alpha channel
- Animate text along a path
- Native DV support
- AVI and QuickTime audio support
- Apply Photoshop® filters to any animation

[Streaming]

The Internet has changed the world we live in, and smart producers are taking advantage of this technology to keep in touch with clients around the corner or across the globe. VT[4] is ready to help you maximize the immediate delivery of shows, video, images, and project proofs to your client. Both live and edited content in VT[4] can be sent real-time to the Internet.

Combining the medium of traditional television broadcasting with the much less traditional medium of Internet, ManiaTV! is using NewTek VT[4] for its entire production pipeline: switching, graphics and Internet streaming of music videos delivered by “Cyber Jockeys”. ManiaTV! CEO Drew Massey says the power of VT[4] with the broad reach of the Internet is changing how we think of broadcast. “Bill Paley delivered network TV. Ted Turner delivered cable TV. And now, thanks to the power and technology engineered in NewTek’s VT[4], ManiaTV! is delivering the next revolution in television—Internet TV.” Massey says he is thrilled with the depth of tools at his disposal, “The VT4 delivers everything ManiaTV! needs to deliver the world’s first Internet TV network. Live switching. Live multi-camera inputs. Live DDRs. Live DSKs. Not to mention fulfilling all off-air encoding, editing and 3D rendering needs. NewTek’s VT[4] is undeniably an entire TV station in a box. David Sarnoff would be both proud and envious.”

With the rapid adoption of broadband internet access, Stream is finding it’s way into more traditional production pipelines. True Life Imaging is one of many post-production companies realizing that time is money, and VT-Stream, an integrated component of VT[4], now plays a critical part in saving them time. True Life’s Ivan Van Dam says this affords them the best of both worlds: immediate communications combined with maximum convenience, “With VT[4], my clients no longer need to make a trip to my office to proof their video. I call them and they can watch the stream live from the convenience of their home or office. Because I don’t have to schedule time for them to come in or make a VHS dub and wait for them to watch it I can finish their video much quicker.”

“Families back home were able to watch this baseball game via a live Internet stream. We had viewers as far away as France, China and Australia. There were several thousand hits on our internet stream in one day.”

—Kris Gurrad
KLTV Longview, WA



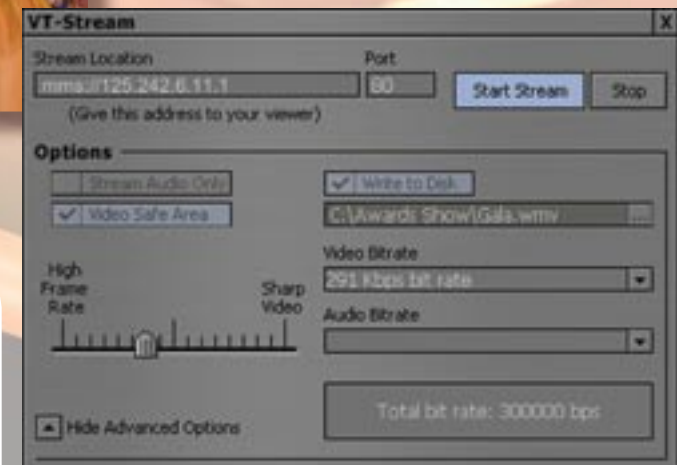
Erin, ManiaTV! CyberJockey.



ManiaTV!’s web site, with live streaming and live chat.

“...an excellent solution for live and Web broadcast with no real competitors, offering real-time switching with a huge range of complementary tools.”

—Neil Bennett
Digit Magazine



[Public Access and Government Video]

Paul Congo, Executive Director of Access Monterey Peninsula, has spent over 25 years involved in community access television, and along the way, he learned what it takes to succeed in this broadcast field.

“VT[4] *LIVE!* is the most practical, user-friendly video suite on the market. The fact that a single operator can have such power at his fingertips continues to amaze me. From broadcasting multi-camera live-switched events to one man productions, VT[4] *LIVE!*'s flexibility is unbeatable. The price point also makes it wonderful for public access. With budget cycles sometimes years apart, VT[4] *LIVE!*'s affordability makes it possible to purchase multiple systems for use in training, remote locations, and in studio.”

“But the real value of VT[4] *LIVE!* is its integration and video quality. Everything's there: switcher, editor, graphics, and even high-end animation capability. VT[4] *LIVE!* is a system that can be used as a switcher OR an editor OR a graphics station. It combines live switching of up to 24 sources, real-time editing of both uncompressed and DV clips, character generation, painting, both 2D and 3D animation, integrated Proc Amps, Waveform and Vectorscope - even Internet streaming capabilities.”

“Bottom line: VT[4] *LIVE!* is well designed, stable, and supported by a company that started the desktop video revolution over a decade ago. There is nothing on the market that compares to the power and quality of this suite of tools, and the price-point is far below anything else that even comes close.”

Bullhead City, AZ, recently began using NewTek's integrated production suite to telecast their City Council meetings on the government cable channel. “The first broadcast using the new system went flawlessly,” reported Don Jackson, of Digital Video Productions. “The manager kept breaking out in laughter with excitement as I was doing the switching, it was obvious just how much impact the VT[4] would have on our overall quality and productivity.”

Don used the NewTek suite's graphics capabilities to spice up the telecast: “I created a network-style opening for the meeting using Aura, and made a down-and-dirty flying logo station ID using LightWave. The professional quality graphics really enhanced the show and were quick and easy to achieve with NewTek's toolset.” VT[4] *LIVE!* can quickly grow beyond the just live broadcast applications. “This past week I shot and edited a 15 minute video that was shown to the Council members and the public,” Jackson said. “After the video some of the members said it was the best work they'd seen from TV[4] and that they want more produced for public consumption.”



Sequence clips and titles for show insertion.



“Seeing VT[4] *LIVE!* billed as a ‘TV Studio in-a-box,’ I had no idea of the extent of the truth of that statement. The ‘studio’ you are shipping with the VT[4] *LIVE!* is better equipped than the NBC affiliate where I was a Producer in 2001. I am amazed at how much the VT[4] *LIVE!* hardware is capable of, and how much it matches or exceeds the equipment I’ve had access to in local and national broadcast facilities!”

—Timothy Albee
Producer, Author, Digital Artist

[Post Production]

Power, flexibility and complete control of the finished product are the ultimate requirements in the fast-paced world of post production, and nothing fits the bill like NewTek's VT[4]: real-time, uncompressed, multi-format, multi-standard editing with the smoothest and fastest workflow in the industry. With Aura Video Paint™ and LightWave 3D® included, you have everything you need to create pristine and compelling productions from a quick-but-beautiful logo or bumper to a polished 15-second spot to a full-bore richly post-produced prime time network television show.

AGA Digital of Chicago, IL, includes McDonald's, Wendy's, ABC, Paramount, Xerox, AT Kearney, Radio Disney, AC Nielsen and many others among the client list they have successfully and profitably served using NewTek tools as the mainstay of their business. "VT[4] is great because it allows for complete flexibility -- from editing, to creating 3D animations, to compositing, to our final product," says founder and CEO Dan Ablan. "We're able to create graphics in LightWave, composite them and then edit the project without any conversions or system changes."

"NewTek's VT[4] allows us to complete projects under ridiculously short deadlines by letting us do in minutes work which would otherwise take hours," said Rich Helvey, lead animator for NBC's *Access Hollywood*. "With its tight integration with LightWave and Aura and its own robust set of video editing tools, VT[4] lets me be as creative as I want to be - sometimes even more! And the real-time operation - I really miss all the free time I used to have while waiting for a render to finish..."

An unprecedented four hurricanes slamming into Florida put intense pressure on the Federal Emergency Management Agency to get timely information out to the networks covering the storms and subsequent cleanup and aid efforts. At the heart of this monsoon of video and updates is NewTek's VT[4]. Media Specialist Aaron Skolnik says the diversity of NewTek tools and its intuitive interface meant meeting near-impossible round-the-clock deadlines. "Everything's intuitive...it doesn't take a lot for me to do what I want it to do. I've got someone who just started a week ago, and he's already producing segments with the rest of us"

"We use VT[4] on a daily basis for producing on-air graphics, station promos and local commercials," said Tim Johnson of KUTV Channel 2, Salt Lake City, UT. "We rely on VT[4] for its beautiful uncompressed output and as a framebuffer for LightWave and After Effects. VT[4]'s tight integration with our other production tools speeds up the workflow just incredibly."



VT-Edit™ offers real-time unlimited layers, soft edges and beautiful slow-motion.

"VT[4] is the centerpiece of our production, replacing a whole room of analog equipment. I can tell you VT[4] saves the taxpayers a lot of money."

*—Aaron Skolnik
U.S. Federal Emergency Management Agency (FEMA)*

"...perhaps the best tool...is its image quality. Along with [my co-workers on *Soeur Emmanuelle: An exceptional woman* for France 5], I was surprised by the superb quality of the images I achieved. The colour correction...is particularly powerful and gives excellent quality..."

*—François Boulene
Visual Effects Artist, Editor, Producer*

[Education]



Create professional graphics in the integrated CG.

"You have exceptional hardware and software working in concert to give you maximum creative freedom. No one does this better than NewTek..."

—Robert Levine
Florida State University Media Production Program

"[This] has been the most cost effective piece of equipment we have bought. To get live switching and the CG with anything else would cost twice as much. Not to mention the cost of camera syncs, etc."

—Richard Adams
Rice Broadcast Television

With one purchase, you can bring your students the entire range of professional video equipment they may expect to encounter in the broadcast and production world. VT[4]'s virtual decks, controllers, monitors, switchers, mixers and scopes work exactly the way the real world equivalents do, and VT[4] also includes the editing, titling, video paint, and 3D production tools found in computer-based production environments.

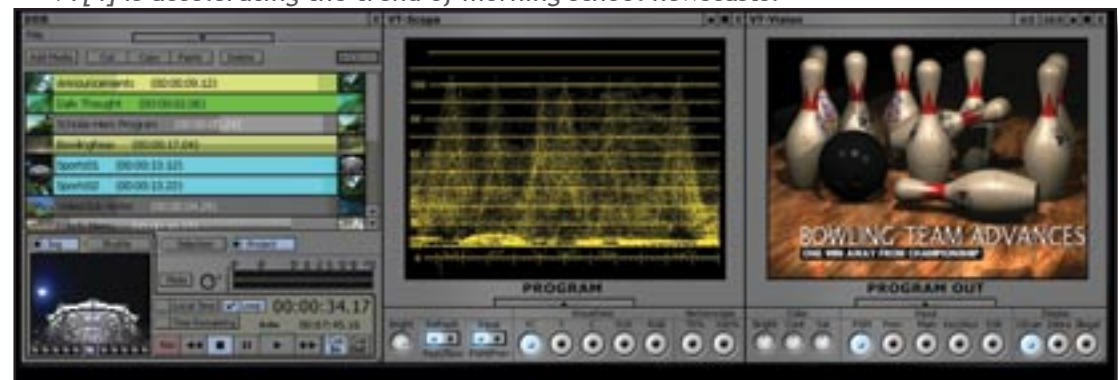
Five Forks Middle School in Norcross, GA, was able to replace a compressed editing system and a suite of external video equipment required to support it, with NewTek's integrated production suite. The students do a daily news show with four or five cameras, among other productions. "With our old equipment, we often tried to make a flashy intro like those on CNN, but the result always looked terrible" said Faraz Ahmad, student. "When we re-created our intro with the NewTek system, we captured uncompressed video with no quality loss, and easily added lots of graphic layers without hassling with several pieces of equipment. We liked the intro so well that we entered it into an international contest, and we won."

With the SX-84, up to 24 cameras and decks can be plugged in for live switching, giving students maximum creativity and control. VT[4] works well with almost any type of camera ranging from high end genlockable cameras to inexpensive consumer equipment and the integrated Proc Amps in VT[4] allow you to color balance all sources, giving users professional results.

NewTek's supportive relationship with customers is the feature of VT[4] that Robert Levine, of Florida State University, finds compelling: "Owning a NewTek product has been as much about buying into a company philosophy as a list of product specs." NewTek stands behind their products with a liberal warranty, regular free updates, and free technical support.

See for yourself the power and ease of use of VT[4] with a hands-on demonstration. Visit www.newtek.com for the location of your nearest NewTek authorized reseller.

VT[4] is accelerating the trend of morning school newscasts.



NewTek VT[4] Hardware Specifications

General	
Type	3.3V / 5V ¼ length PCI Card
Analog Video Connectors	(3) 15 pin high density (adapter cables with BNC connectors included)
Analog Audio Connectors	(1) 3.5mm stereo
Digital Video/Audio Connector	90 pin digital video/audio bus Interface PCI bus mastering Firmware Field Upgradable
Supported video I/O formats	Composite, Component, S-Video (Y/C), SDI, NTSC & PAL
Digital format	8 bit ITU-R BT.601
Uncompressed video	Yes
Time base corrector	Internal. External unit not required
Genlock	Integrated; syncs either VT[4] or external house sync. Vertical, horizontal and subcarrier phase controls
Comb Filter	2-line luma and chroma comb filters including adaptive luma comb for NTSC

Technical	
Video Channels	1 input, 1 output (Analog), 3 input, 2 output (Digital Connector)
Audio Channels	4 channels in, adjustable mic or line level 4 channels out, line level

Video Levels (In/Out)	
Composite	1V p-p 75 Ohm
S-Video	
Luminance	1V p-p 75 Ohm
Chroma	286 mV p-p 75 Ohm

Component - Betacam	
Luminance	714mV p-p 75 Ohm
R-Y,B-Y	700 mV p-p 75 Ohm

Component - MII	
Luminance	700mV p-p 75 Ohm
R-Y,B-Y	486 mV p-p 75 Ohm

Video Performance	
Noise Level	-58 dB
Luminance frequency response (maximum variation to 4.2 MHz - multi burst)	2 dB
Differential phase - (Modulated 40 IRE ramp)	1 degree
Differential gain - (Modulated 40 IRE ramp)	1.5 %
Chrominance frequency response (3 dB point) -CBWR=0/1	800/500 KHZ
K Factor (K-2T)	1 %
Luminance Non Linearity	+/- 2 %
Minimum IRE passable from input to output (super black)	6.5 below black IRE
Maximum IRE passable from input to output	8 above white IRE

On Board Audio Performance *	
Frequency Response	20HZ - 20KHZ +/- 1 dB
Harmonic Distortion (THD+N)	< .05 %
Dynamic Range Unweighted/A weighted	>80 / >83 dB
Audio Sample Rate	48 KHZ
*Circuit board Rev E with audio ECO.	



Winner of the 2004 Best Product Award



NAB 2004 Best of Show: Streaming Hardware

Optional Hardware Specifications

SX-84 Hardware Video

8 Component inputs, or 8 Y/C inputs, or 24 Composite inputs. (You may have inputs of differing formats on differing rows, so you can have all three formats feeding to the VT at any time).
Proc Amp controls for each input
Multiple inputs internally synchronized; cameras do not require genlock capability.
4 Component or Y/C program outputs
4 Composite program outputs
Preview output (can also display Alpha)

Audio IN

4 XLR balanced inputs (mic or line level, switchable phantom power)
4 XLR balanced outputs
12 RCA unbalanced inputs (6 stereo pairs)
2 Auxiliary Return inputs

OUT

4 XLR balanced outputs
8 Unbalanced RCA outputs
2 Auxiliary Send outputs
1 PA Mix

Machine Control

3 RS-422 deck controls for digitizing and batch recapture

Optional SDI Card Hardware Specifications

3/4-length PCI card (requires free PCI slot)
1 SMPTE 259M Serial Digital Video in
1 SMPTE 259M Serial Digital Video out
1 SMPTE 259M Serial Digital Preview or Alpha Channel out
1 AES/EBU Serial Digital Audio in
1 AES/EBU Serial Digital Audio out

Recommended VT[4] System Configuration*

- Single Intel® P4 or Xeon, 2.9GHz or faster (Dual CPU systems are strongly recommended).
- A free 66MHz PCI slot for the VT[4] card is recommended for best performance.
- AGP-slot interface on motherboard for graphics card.
- 512Mb RAM.
- 4x U160 SCSI drives, with the controller on a 64bit PCI bus; 8 GB space for DVEs and content. UDMA IDE system drive with 500Mb of free disk space is required for installation.
- Windows® 2000 (SP3) or XP Professional (SP1)
- Windows® Media Player 9 or higher
- Windows® Media Encoder 9 or higher for streaming
- DirectX 9.0c or higher
- Latest graphics card drivers

*NewTek recommends the optimal system configuration. Systems of lesser processor and drive speed will work with VT[4] but some complex functions may not perform in real-time. To review the minimum specifications suitable to your production requirements visit www.newtek.com. Additionally, as new technology becomes available, system recommendations will be updated. Please refer to www.newtek.com for the latest information.

Specifications subject to change without notice.



NewTek, Inc.
5131 Beckwith Blvd.
San Antonio, TX 78249
1-800-862-7837
+1-210-370-8000
www.newtek.com

LightWave, and LightWave 3D are registered trademarks of NewTek, Inc. in the United States and/or other countries. Aura, Aura Video Paint, TV Studio-in-a-Box, VT[4], VT[4] LIVE! and VT-Edit are trademarks of NewTek, Inc. in the United States and/or other countries. Windows is a registered trademark of Microsoft in the United States and/or other countries. Final Cut Pro is a registered trademark of Apple Computer, Inc. in the United States and/or other countries. Adobe, After Effects, Illustrator, Photoshop and Premiere are registered trademarks of Adobe Systems Incorporated in the United States and/or other countries. Digital Fusion is a registered trademark of eyeon Software Incorporated. combustion, flame, and 3ds max are registered trademarks of Autodesk/Discreet in the USA and/or other countries. Canopus is a registered trademark of Canopus, Inc., and DVStorm is a trademark of Canopus, Inc. SteadiCam is a registered trademark of The Tiffen Co., LLC. NewTek assumes no responsibility for the following: Jealous Friends, Bankrupt Competitors or Overzealous Groupies.